

Meetings & Events



WORKSHOPI7 | West Street



Situated adjacent to Sandton Gautrain, Nelson Mandela Square, Sandton City and Convention Centre, Workshop17 West Street thrives in the epicentre of business Africa.

Feel the energy at a Workshop17 West Street event - whether you're hosting a seminar, a national strategy session, or networking at one of our partner events. Non-members can also book seminar rooms and auditorium space.

Workshop17 designs, builds and manages coworking and eventing facilities.

Our drive is to create beautiful collaborative workspaces for entrepreneurial people and businesses across South Africa.

Our ecosystem provides the workspace, services and community you need to thrive. From flexible working options, to private and dedicated offices, meeting and eventing spaces, Workshop17 provides the continuum of space, allowing our members ease of access to shared resources in friction-free environments.

Pricing Overview

VENUE	HOURLY COST Ex VAT	DAILY COST Ex VAT	SIZE	CAPACITY				INCLUDES
				CINEMA	CLASSROOM	BOARDROOM	OTHER	
Meeting Rooms 0.01, 0.02	R210	R1 680	10m ²	-	-	4	-	WIFI, 1 x 43inch TV, Wireless Connection in 0.02, VC Functionality, Writable wall
Meeting Room 0.03	R310	R2 480	16m ²	-	-	4	-	WIFI, 1 x 43inch TV, Wireless Connection, VC Functionality, Writable wall
Meeting Room 1.19	R390	R3 120	17m ²	-	-	8	-	WIFI, 1 x 43inch TV, Wireless Connection, VC Functionality, Writable wall
Meeting Room 2.1& 2.2	R240	R1 920	9-13m ²	-	-	4	-	WIFI, 1 x 43inch TV, Wireless Connection, VC Functionality, Writable wall
Meeting Room 2.3	R310	R2 480	21m ²	-	-	6	-	WIFI, 1 x 43inch TV, Wireless Connection, VC Functionality, Writable wall
Meeting Room 2.4	R240	R1 920	19m ²	-	-	6	-	WIFI, 1 x 43inch TV, Wireless Connection, VC Functionality, Writable wall
Boardroom 1	R770	R6 160	35m ²	-	-	16	-	WIFI, 2 x 55inch TV, Wireless Connection, VC Functionality, Writable wall
Boardroom 2	R580	R4 650	34m ²	-	-	12	-	WIFI, 2 x 55inch TV, Wireless Connection, VC Functionality, Writable wall
Seminar Room 1	R5 000 (1/2 day)	R8 000 (full day)	40m ²	30	10	12	Caberet:18 U-shape: 15	WIFI, Projector and Screen, Surround Sound, Wireless Connection, Writable wall
Seminar Room 2	R9 500 (1/2 day)	R16 000 (full day)	92m ²	70	45	-	Caberet:36 U-shape: 24	WIFI, Projector and Screen, Surround Sound, Wireless Connection, Writable wall
Auditorium	R12 000 (1/2 day)	R20 000 (full day)	118m ²	150	-	-	-	WIFI, 2 x 55inch TV, Projector and Screen, Surround Sound, Wireless Connection, Writable wall, Podium, 2 x Handheld Mics & 2 Lapel Mics, VC Functionality

Streaming, Catering, W17 Notepads & pens available at additional cost. Inquire with the team.

*After hours bookings on weekdays after 6pm, weekends and public holidays, extra staff costs apply.

Meeting Rooms

0.1, 0.2

FULLY EQUIPPED WITH:

- LCD screen for presentations through HDMI input. Mac adaptors can be provided
- Video Conferencing Facilities
- VoIP
- Writable Wall
- Uncapped WIFI

HOURLY COST Ex VAT	R210
DAILY COST Ex VAT	R1 680
SEATS	4

0.1



0.2

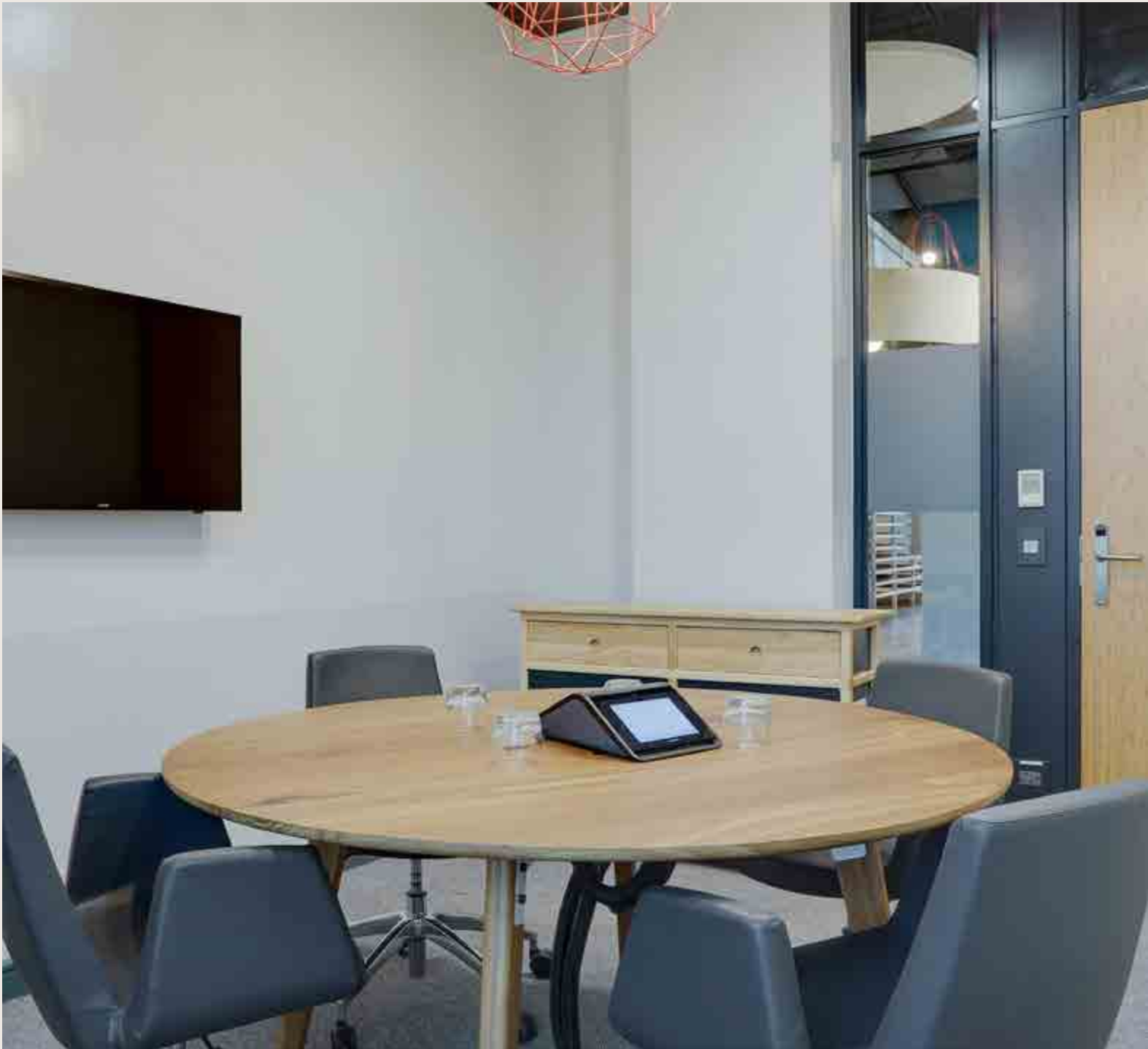


Meeting Room

0.3

FULLY EQUIPPED WITH:

- LCD screen for presentations through HDMI input. Mac adaptors can be provided
- Video Conferencing Facilities
- VoIP
- Writable Wall
- Uncapped WIFI



HOURLY COST Ex VAT	R310
DAILY COST Ex VAT	R2 480
SEATS	4

Meeting Room

1.19

FULLY EQUIPPED WITH:

- LCD screen for presentations through HDMI input. Mac adaptors can be provided
- Video Conferencing Facilities
- VoIP
- Writable Wall
- Uncapped WIFI



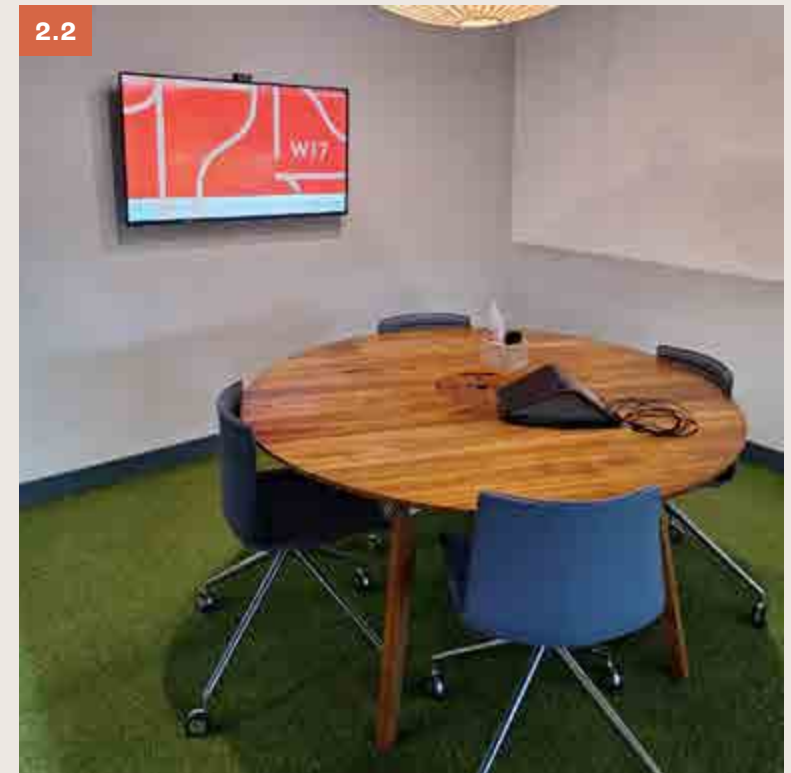
HOURLY COST Ex VAT	R390
DAILY COST Ex VAT	R3 120
SEATS	8

Meeting Rooms

2.1, 2.2

FULLY EQUIPPED WITH:

- LCD screen for presentations through HDMI input. Mac adaptors can be provided
- Video Conferencing Facilities
- VoIP
- Writable Wall
- Uncapped WIFI



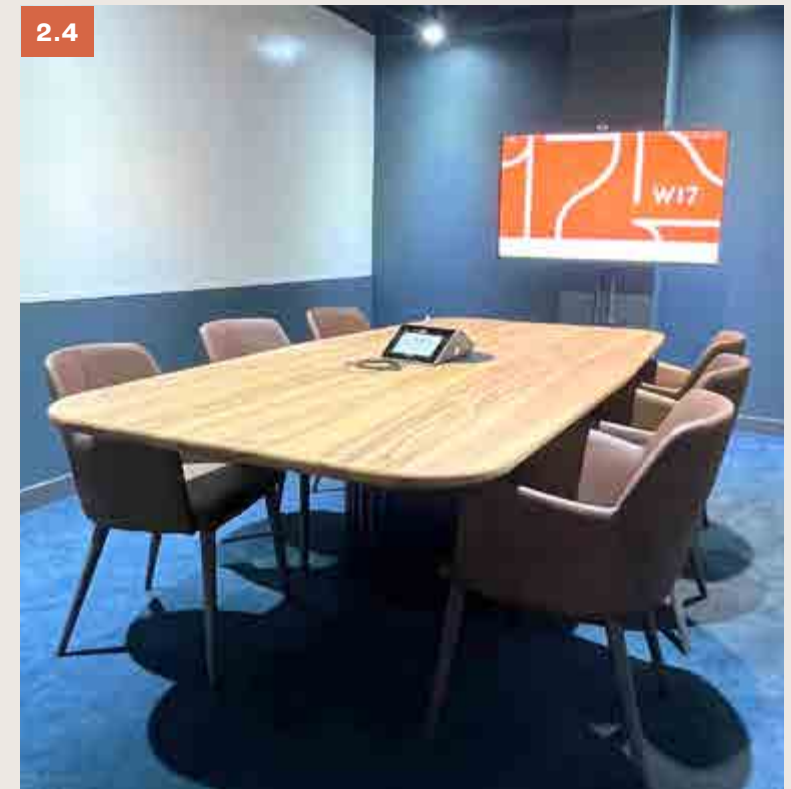
HOURLY COST Ex VAT	R240
DAILY COST Ex VAT	R1 920
SEATS	4

Meeting Rooms

2.3 & 2.4

FULLY EQUIPPED WITH:

- LCD screen for presentations through HDMI input. Mac adaptors can be provided
- Video Conferencing Facilities
- VoIP
- Writable Wall
- Uncapped WIFI



HOURLY COST Ex VAT	from R240
DAILY COST Ex VAT	from R1 920
SEATS	6

Boardroom

1

FULLY EQUIPPED WITH:

- LCD screen
- Wireless connectivity is available from our Crestron Mercury Device
- Writable Wall
- Uncapped WIFI



HOURLY COST Ex VAT	R770
DAILY COST Ex VAT	R6 160
SEATS	16

Boardroom

2

FULLY EQUIPPED WITH:

- LCD screen
- Wireless connectivity is available from our Crestron Mercury Device
- Writable Wall
- Uncapped WIFI



HOURLY COST Ex VAT	R580
DAILY COST Ex VAT	R4 650
SEATS	12

Seminar Room

1

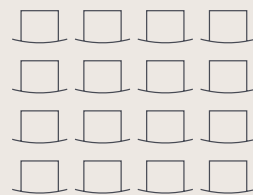
FULLY EQUIPPED WITH:

- Projector and screen presentations through HDMI input.
- Mac adaptors can be provided
- Writable Wall
- Uncapped WIFI
- Flexible setups

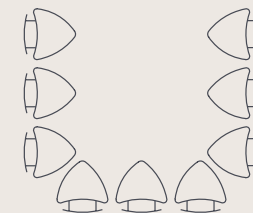


Flexible Setup Options

1/2 DAY Ex VAT	R5 000
DAILY COST Ex VAT	R8 000
SEATS	15-30



CINEMA STYLE (30 SEATS)



BOARDROOM (12 SEATS)



CLASSROOM ROOM (10 SEATS)

Seminar Room

2

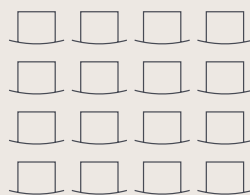
FULLY EQUIPPED WITH:

- Projector and screen presentations
- Writable Wall
- Uncapped WIFI
- Flexible setups

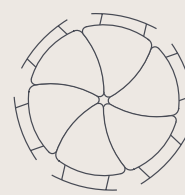


Flexible Setup Options

1/2 DAY Ex VAT	R9 500
DAILY COST Ex VAT	R16 000
SEATS	24-70



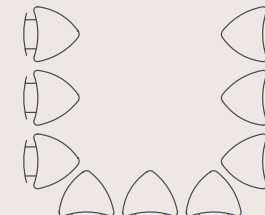
CINEMA STYLE (70 SEATS)



CABARET (36 SEATS)



SCHOOL ROOM (40 SEATS)



U-SHAPE 24 SEATS

The Auditorium

FULLY EQUIPPED WITH:

- Projector and screen
- Writable Wall
- Uncapped WIFI
- VC Functionality



1/2 DAY Ex VAT	R12 000
DAILY COST Ex VAT	R20 000
SEATS	120-150



Enquiries or bookings

Call +27 (0)10 599 0322 or email us at weststreet@workshop17.co.za
www.workshop17.co.za

