

# Meetings & Events



WORKSHOP17 | The Bank





Situated in the heart of Rosebank, a minute walk away from the Gautrain station and adjacent to the Rosebank Mall. Workshop17 The Bank offers exceptional co-working space and flexible office solutions amongst the bustle of Rosebank.

The Bank offers day and night eventing with a café on the first floor, private offices, meeting rooms and members lounges. The building supports a work-life balance with a hotel sharing the state-of-the-art Manhattan-style building.

The building uses mainly renewable energy sources, such as a solar farm on the roof to power the building, as well as a heat recovery system which reuses the waste heat from the HVAC to heat water for the hotel.

This is the perfect opportunity for companies looking to downscale to partial remote work with a few employees needing workspace during the week. Workshop17 memberships are catered to the individual looking for a convenient space to work and meet clients. Whether you're a team of 2 or 20, we cater to all workspace needs with our private offices and hot desks. Let our team assist you with the ultimate flexible enterprise solution for your business.

---



# Meeting Rooms

VENUE	HOURLY COST Ex VAT	DAILY COST Ex VAT	SIZE	CAPACITY	INCLUDES
Meeting Room 1.06 & 1.08	R 190	R1 520	10-15m <sup>2</sup>	4	WIFI, Writable Wall, lounge seating
Consultation Rooms C1.01, C1.02 & C1.03	R190	R1 520	9-12m <sup>2</sup>	3-4	WIFI, Lounge Seating, C1.02 is a table setting
Meeting Room 1.02 & 3.02	R250	R2 000	14-15m <sup>2</sup>	6	WIFI, 1 x 43inch TV, Wireless Connection, Video Conferencing facilities, Writable Wall
Meeting Room 1.07, 2.02 & 3.01	R340	R2 720	17-21m <sup>2</sup>	8	WIFI, 1 x 55inch TV, Wireless Connection, Video Conferencing facilities, Writable Wall
Meeting Room 1.01, 1.03, 1.05 & 2.01	R500	R4 000	22-37m <sup>2</sup>	10-12	WIFI, 1 x 55inch TV, Wireless Connection, Video Conferencing facilities, Writable Wall
Meeting Room 3.03	R880	R7 000	42m <sup>2</sup>	16	WIFI, 1 x TV Screen, Wireless Connection, Video Conferencing facilities, Writable Wall

# Eventing Spaces

SEMINARS	HALF DAY COST Ex VAT	DAILY COST Ex VAT	SIZE	CAPACITY	INCLUDES
Seminar Room 1.A or 1.B	R 8 000	R12 000	72m <sup>2</sup>	25	WIFI, Outdoor Seating, Lighting, 1 x Mobile 65inch TV, Flip Chart, Mic, Podium, Shutting Doors
Seminar Room 1.AB		R22 000	144m <sup>2</sup>	50	WIFI, Outdoor Seating, Lighting, 1 x Mobile 65inch TV, Flip Chart, Mic, Podium, Shutting Doors
Seminar Room 1.AB + Cafe		R35 000		50 - 100	WIFI, Outdoor Seating, Lighting, 1 x Mobile 65inch TV, Flip Chart, Mic, Podium, Shutting Doors
Seminar Room 3	R15 000	R27 000	173m <sup>2</sup>	60	WIFI, Outdoor Seating, Lighting, 1 x Mobile 55inch TV, Flip Chart, Mic, Podium, Shutting Doors
Courtyard	R8 000	R12 000	16m <sup>2</sup>	20	Tables and lounge furniture, Piano, Projector, WIFI

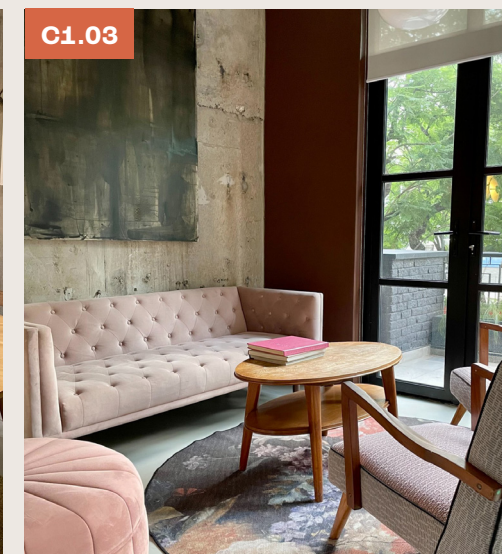
\*Catering, W17 Notepads & pens, Parking and any extra technical requirements available at additional cost. Inquire with the team. After hours bookings on weekdays after 6pm, weekends and public holidays, extra staff costs apply. Seating capacity is subject to change

# Meeting Room

1.06, 1.08, C1.01,  
C1.02 & C1.03

## FULLY EQUIPPED WITH:

- Lounge Seating
- Writable Wall or flipcharts available on request
- WIFI



HOURLY COST  
Ex VAT

R 190

DAILY COST  
Ex VAT

R 1 520

SEATS

3-4

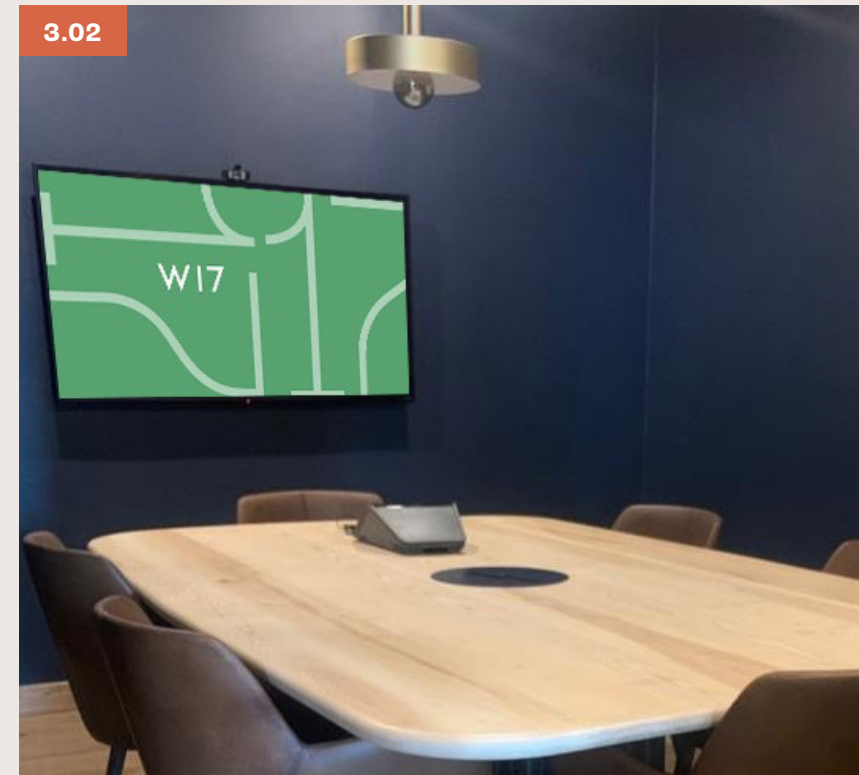
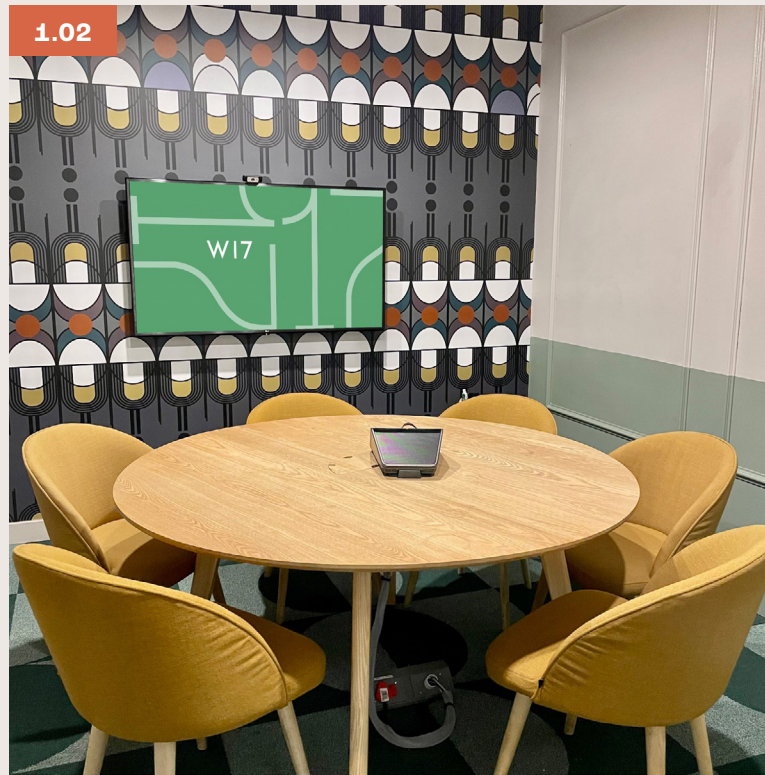


# Meeting Room

1.02 & 3.02

## FULLY EQUIPPED WITH:

- LCD screen for presentations through HDMI input. Mac adaptors can be provided upon request
- Wireless connectivity
- Video Conferencing Facilities
- VoIP
- Writable Wall



<b>HOURLY COST</b> Ex VAT	<b>R250</b>
<b>DAILY COST</b> Ex VAT	<b>R2 000</b>
<b>SEATS</b>	<b>6</b>

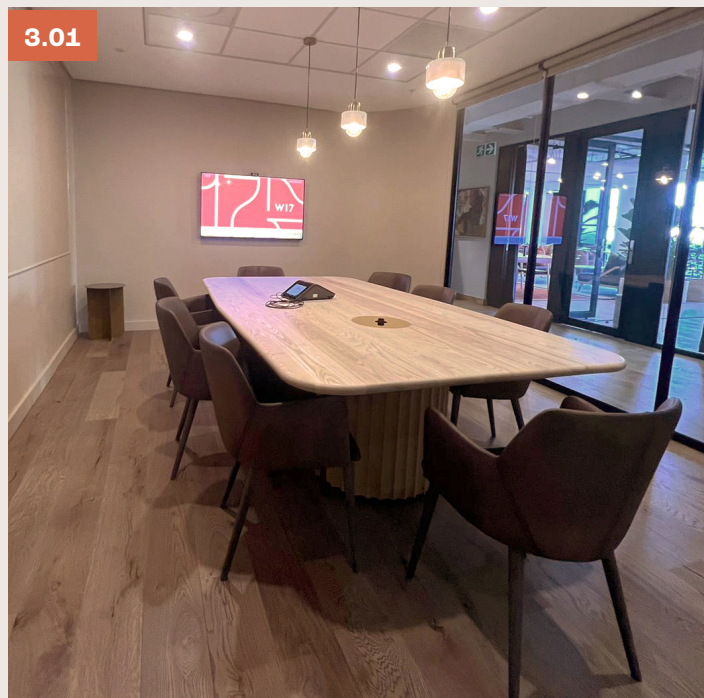
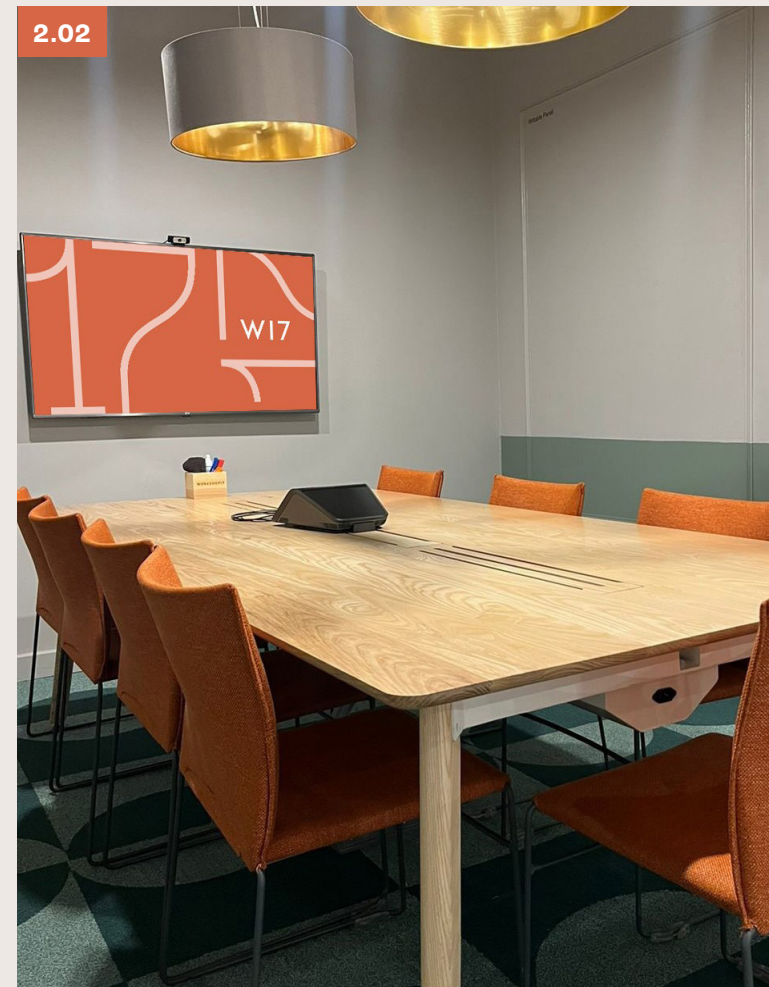
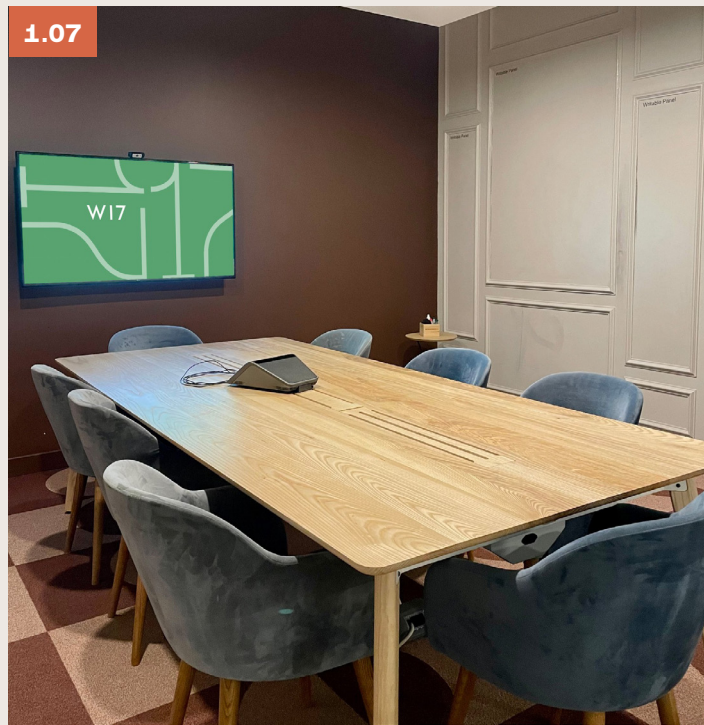


# Meeting Rooms

1.07, 2.02 & 3.01

## FULLY EQUIPPED WITH:

- LCD screen for presentations through HDMI input. Mac adaptors can be provided
- Wireless connectivity
- Video Conferencing Facilities
- VoIP
- Writable Wall
- WIFI



<b>HOURLY COST</b> Ex VAT	<b>R340</b>
<b>DAILY COST</b> Ex VAT	<b>R2 720</b>
<b>SEATS</b>	<b>8</b>

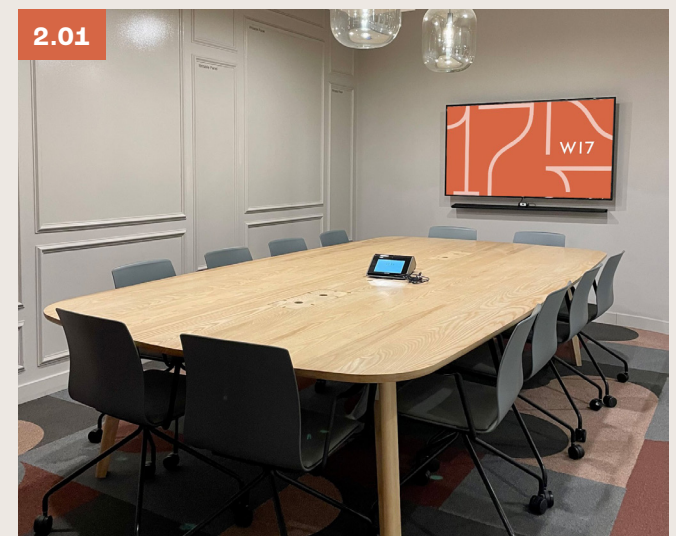
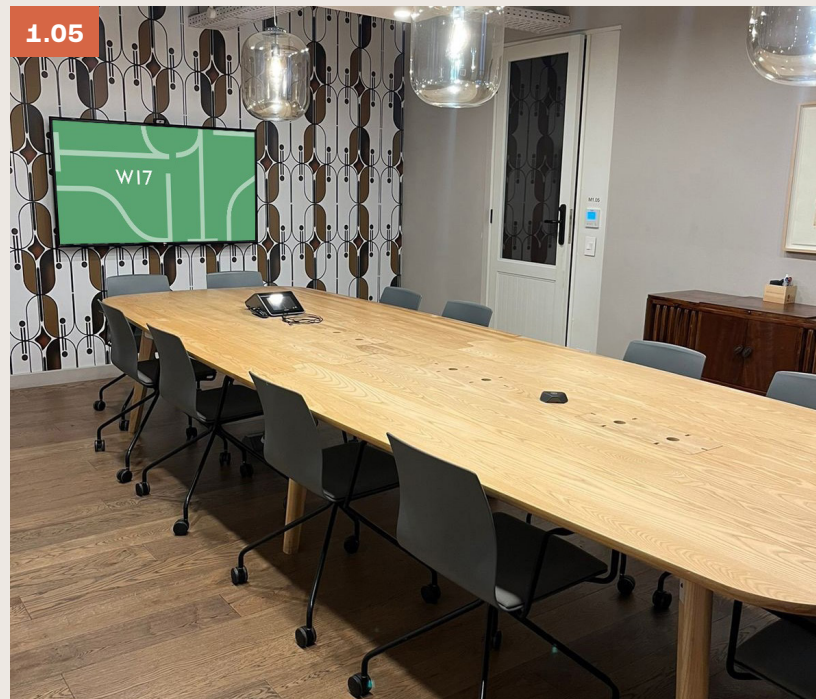


# Meeting Rooms

1.01, 1.03, 1.05 & 2.01

## FULLY EQUIPPED WITH:

- LCD screen for presentations through HDMI input. Mac adaptors can be provided upon request
- Wireless connectivity
- Video Conferencing Facilities
- VoIP
- Writable Wall
- WIFI



<b>HOURLY COST</b> Ex VAT	<b>R500</b>
<b>DAILY COST</b> Ex VAT	<b>R4 000</b>
<b>SEATS</b>	<b>10-12</b>



# Meeting Rooms

3.03

## FULLY EQUIPPED WITH:

- LCD screen for presentations through HDMI input. Mac adaptors can be provided upon request
- Wireless connectivity
- Video Conferencing Facilities
- VoIP
- Writable Wall
- WIFI



<b>HOURLY COST</b> Ex VAT	<b>R880</b>
<b>DAILY COST</b> Ex VAT	<b>R7 000</b>
<b>SEATS</b>	<b>16</b>



# Courtyard

## FULLY EQUIPPED WITH:

- Piano
- Projector
- WIFI



**HALF DAY**

Ex VAT

**R8 000**

**DAILY COST**

Ex VAT

**R12 000**

**SEATS**

**20**



# Seminar Rooms

1A or 1B or 1AB

## FULLY EQUIPPED WITH:

- Access to Felix Cafe
- Outdoor seating
- Natural Conservatory Lighting
- Mobile 55inch TV. Mac adaptors can be provided upon request
- Hand Held Mic & Lapel Mic
- Podium
- Flip charts available on request
- WIFI
- Flexible setups (please arrange a site visit)
- Consertina Shutting Doors (Double Glazed)

### 1A OR 1B

Half Day Ex VAT	R8 000
Daily Cost Ex VAT	R12 000
SEATS	25

### 1AB

COST Ex VAT	R22 000
After hours 18:00 - 22:00 Seminar AB & Cafe	R35 000
SEATS	50 - 100





# Seminar Room

3

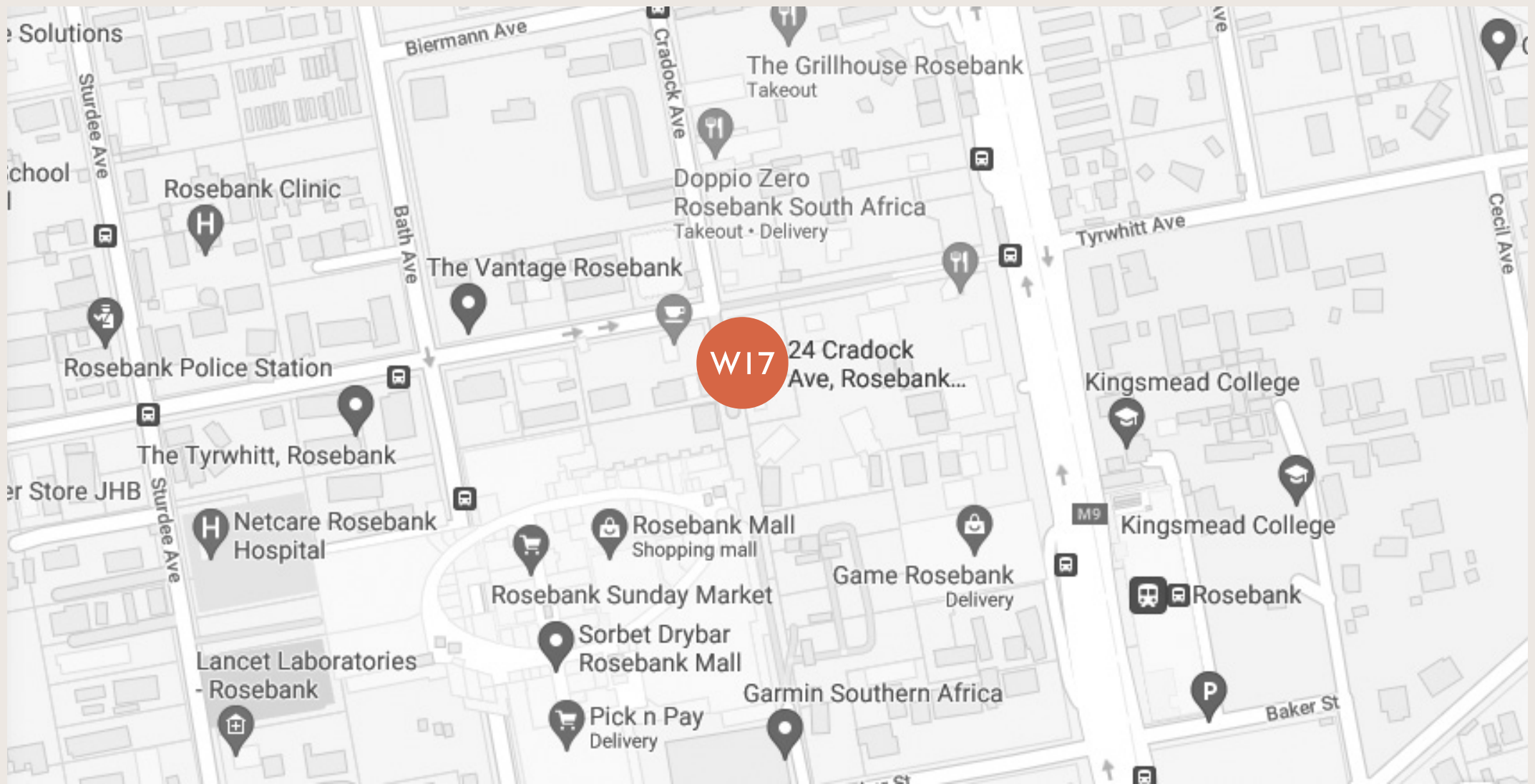
## FULLY EQUIPPED WITH:

- Access to Felix Cafe
- Natural Conservatory lighting
- Mobile 55inch TV. Mac adaptors can be provided upon request
- Hand held mic & lapel mic
- Podium
- Flip charts available on request
- Uncapped WIFI



<b>HALF DAY (0-4 HOURS)</b> Ex VAT	<b>R15 000</b>
<b>FULL DAY</b> Ex VAT	<b>R27 000</b>
<b>SEATS</b>	<b>60</b>





## Enquiries or bookings

Call +27 (0)10 500 1453 or email us at [thebank@workshop17.co.za](mailto:thebank@workshop17.co.za)

[www.workshop17.co.za](http://www.workshop17.co.za)

